

WinBox

- 1 [Summary](#)
- 2 [Starting WinBox](#)
 - 2.1 [Simple mode](#)
 - 2.1.1 [Buttons/check-boxes and Other Fields](#)
 - 2.1.2 [Menu Items](#)
 - 2.2 [Advanced mode](#)
 - 2.2.1 [Buttons/check-boxes and Other Fields](#)
 - 2.3 [Command Line](#)
 - 2.4 [IPv6 connectivity](#)
 - 2.5 [Run WinBox on macOS](#)
 - 2.6 [Run WinBox on Linux](#)
- 3 [Interface Overview](#)
- 4 [Work Area and Child Windows](#)
 - 4.1 [Child window menu bar](#)
 - 4.2 [Sorting out displayed items](#)
 - 4.3 [Customizing list of displayed columns](#)
 - 4.3.1 [Detail mode](#)
 - 4.3.2 [Category view](#)
 - 4.4 [Drag & Drop](#)
 - 4.5 [Traffic monitoring](#)
 - 4.6 [Item copy](#)
- 5 [Transferring Settings](#)
- 6 [Troubleshooting](#)
 - 6.1 [WinBox cannot connect to the router's IP address, devices do not show up in the Neighbors list](#)
 - 6.2 [I get an error '\(port 20561\) timed out' when connecting to routers mac address](#)
 - 6.3 [I can't find my device in WinBox IPv4 Neighbors list or MAC connection fails with "ERROR could not connect to XX-XX-XX-XX-XX-XX"](#)

Summary

WinBox is a small utility that allows the administration of MikroTik RouterOS using a fast and simple GUI. It is a native Win32/Win64 binary but can be run on **Linux** and **macOS (OSX)** using Wine. All WinBox interface functions are as close as possible mirroring the console functions, that is why there are no WinBox sections in the manual. Some advanced and system critical configurations are not possible from the WinBox, like MAC address change on an interface.

From WinBox v3.14, the following security features are used:

- WinBox.exe is signed with an Extended Validation certificate, issued by SIA Mikrotikls (MikroTik).
- WinBox uses ECSRП for key exchange and authentication (requires a new WinBox version).
- Both sides verify that the other side knows the password (no man in the middle attack is possible).
- WinBox in RoMON mode requires that the agent is the latest version to be able to connect to the latest version routers.
- WinBox uses AES128-CBC-SHA as an encryption algorithm (requires WinBox version 3.14 or above).

Starting WinBox

WinBox loader can be downloaded from the [MikroTik download page](#). When WinBox.exe is downloaded, double click on it, and the WinBox loader window will pop up. There are two WinBox loader modes: simple which is enabled by default and advanced.

Simple mode

When you open WinBox loader for the first time simple mode layout will be used:

WinBox v3.20rc4 (Addresses)

File Tools

Connect To: ☒ Keep Password ☐ Open In New Window

Login:

Password:

Managed Neighbors

MAC Address	IP Address	Identity	Version	Board
4C:5E:0C:11:59:12	0.0.0.0	KPOT_SW	6.45.5 (stable)	CRS112-8G-4S-IN
D4:CA:6D:D3:05:71	0.0.0.0	GU_EP_SW	6.43.2 (stable)	RB2011UAS-2HnD
E4:8D:8C:9D:34:E3	0.0.0.0	JB_KJ_SW	6.43.2 (stable)	CRS112-8G-4S
D4:CA:6D:73:98:22	1.1.1.1	3C22-atombumba	6.45.5 (testing)	CCR1036-12G-4S

To connect to the router enter the IP or MAC address of the router, specify username and password (if any) and click on the **Connect** button. You can also enter the port number after the IP address, separating them with a colon, like this 192.168.88.1:9999. The port can be changed in the RouterOS **services** menu.



It is recommended to use an IP address whenever possible. MAC session uses network broadcasts and is not 100% reliable.

You can also use neighbor discovery, to list available routers use the **Neighbors** tab:

Managed **Neighbors** 1.

2.

MAC Address	IP Address	Identity	Version	Board
52:54:00:E1:94:24	fe80::5054:ff:fee1:9424	MikroTik	6.35rc46 ...	x86
52:54:00:DA:0E:19	fe80::5054:ff:feda:e19	MikroTik	6.36rc6 (t...	x86
52:54:00:BB:DD:B8	fe80::5054:ff:febb:ddb8	MikroTik	6.35rc40 ...	x86
52:54:00:80:BA:57	fe80::5054:ff:fe80:ba57	MikroTik	6.35rc34 ...	x86
52:54:00:69:2D:E8	fe80::5054:ff:fe69:2de8	MikroTik	6.34.3 (st...	x86
52:54:00:0F:03:93	fe80::5054:ff:fe0f:393	MikroTik	6.35rc49 ...	x86
4C:5E:0C:F6:C0:AB	fe80::4e5e:cff:fe6:c0ab	3C18-Krisjanis_GW	6.36rc6 (t...	CCR1036-12G-4S
4C:5E:0C:97:FD:99	fe80::4e5e:cff:fe97:fd99	crs226.lan	6.34 (sta...	CRS226-24G-2S+
00:0C:42:F0:B2:E6	fe80::20c:42ff:fe0:b2e6	ppc.lan	6.35rc15 ...	RB1100Hx2
4C:5E:0C:F6:C0:AB	10.5.104.254	3C18-Krisjanis_GW	6.36rc6 (t...	CCR1036-12G-4S
D4:CA:6D:1C:37:54	10.5.104.251	power.local	1.14	RB260GSP
E4:8D:8C:35:95:AC	10.5.104.250	3k.lan	6.35rc22 ...	RB3011UiAS
E4:8D:8C:17:E4:1A	10.5.104.249	nine.lan	6.35rc37 ...	CCR1009-8G-1S-...
4C:5E:0C:74:76:80	10.5.104.247	wall.local	1.14	RB260GSP
4C:5E:0C:97:FD:99	10.5.104.246	crs226.lan	6.34 (sta...	CRS226-24G-2S+
4C:5E:0C:C8:EB:65	10.5.104.245	plus.lan	6.35rc48 ...	CCR1036-8G-2S+
00:0C:42:F0:B2:E6	10.5.104.243	ppc.lan	6.35rc15 ...	RB1100Hx2

From the list of discovered routers, you can click on the IP or MAC address column to connect to that router. If you click on IP address then IP will be used to connect, but if you click on MAC Address then the MAC address will be used to connect to the router.



Neighbor discovery will show also devices that are not compatible with WinBox, like Cisco routers or any other device that uses CDP (Cisco Discovery Protocol). If you will try to connect to a SwOS device, then the connection will be established through a web browser

Buttons/check-boxes and Other Fields

- **Connect** - Connect to the router
- **Connect To RoMON** - Connect to **RoMON** Agent
- **Add/set** - Save/Edit any of the saved router entries in the **Managed** tab.
- **Open In New Window** - Leaves loader open in the background and opens new windows for each device to which connection is made.
- **Connect To:** - destination IP or MAC address of the router
- **Login** - username used for authentication
- **Password** - password used for authentication
- **Keep Password** - if unchecked, the password is not saved to the list

Menu Items

- **File**
 - **New** - Create a new managed router list in a specified location
 - **Open** - Open managed router list file
 - **Save As** - Save current managed router list to file
 - **Exit** - Exit WinBox loader
- **Tools**
 - **Advanced Mode** - Enables/Disables advanced mode view
 - **Import** - Imports saved session file
 - **Export** - Exports saved session file
 - **Move Session Folder** - Change path where session files are stored
 - **Clear cache** - Clear WinBox cache
 - **Check For Updates** - Check for updates for WinBox loader

Advanced mode

Additional WinBox loader parameters are revealed when an **advanced mode** is enabled with *Tools → Advanced Mode*:

The screenshot shows the WinBox v3.20rc4 (Addresses) window. The top menu bar includes 'File' and 'Tools'. The main configuration area contains the following fields and controls:

- Connect To:** Text field with '10.155.101.1' entered.
- Login:** Text field with 'admin' entered.
- Password:** Text field (empty).
- Session:** Text field with '<own>' entered, a dropdown arrow, and a 'Browse...' button.
- Note:** Text field with '3C22-atombumba' entered.
- Group:** Text field (empty) with a dropdown arrow.
- RoMON Agent:** Text field (empty) with a dropdown arrow.
- Buttons:** 'Add/Set', 'Connect To RoMON', and 'Connect' buttons.
- Checkboxes:** 'Keep Password' (checked), 'Autosave Session' (checked), and 'Open In New Window' (unchecked).

Below the configuration area is a tabbed interface with 'Managed' and 'Neighbors' tabs. The 'Managed' tab is active, showing a table of managed devices. The table has columns for MAC Address, IP Address, Identity, Version, and Board. A 'Find' search bar and a 'Refresh' button are located above the table.

MAC Address	IP Address	Identity	Version	Board
4C:5E:0C:11:59:12	0.0.0.0	KPOT_SW	6.45.5 (stable)	CRS112-8G-4S-IN
D4:CA:6D:D3:05:71	0.0.0.0	GU_EP_SW	6.43.2 (stable)	RB2011UAS-2HnD
E4:8D:8C:9D:34:E3	0.0.0.0	JB_KJ_SW	6.43.3 (stable)	CRS112-8G-4S
D4:CA:6D:73:98:22	1.1.1.1	3C22-atombumba	6.45beta45 (testing)	CCR1036-12G-4S

Buttons/check-boxes and Other Fields

Buttons/check-boxes

- **Browse** - Browse file directory for some specific session
- **Keep Password** - if unchecked, the password is not saved to the list
- **Secure mode** - if checked, WinBox will use DH-1984 for key exchange and modified and hardened RC4-drop3072 encryption to secure the session.
- **Autosave session** - Saves sessions automatically for devices to which connections are made.

Fields:

- **Session** - Saved router session.
- **Note** - Note that is assigned to save router entry.
- **Group** - Group to which saved router entry is assigned.
- **RoMON Agent** - Select RoMON Agent from the available device list



Managed routers list is encrypted, but it can still be loaded with another WinBox, **IF** the master password is not set for it!

Command Line

It is possible to use the command line to pass connect to, user and password parameters automatically:

```
winbox.exe [<connect-to> [<login> [<password>]]]
```

For example (with no password):

```
winbox.exe 10.5.101.1 admin ""
```

Will connect to router 10.5.101.1 with user "admin" without a password.

It is possible to use the command line to pass connect to, user, and password parameters automatically to connect to the router through RoMON. In this case, RoMON Agent must be saved on the Managed routers list so WinBox would know the user and password for this device:

```
winbox.exe --romon [<romon-agent> [<connect-to> [<login> [<password>]]]]
```

For example (with no password):

```
winbox.exe --romon 10.5.101.1 D4:CA:6D:E1:B5:7D admin ""
```

Will connect to router D4:CA:6D:E1:B5:7D, through 10.5.101.1 via RoMON Agent with user "admin" without a password.

IPv6 connectivity

WinBox supports IPv6 connectivity. To connect to the router's IPv6 address, it must be placed in square braces the same as in web browsers when connecting to the IPv6 server. Example:

[db8::1](#)

when connecting to the link-local address interface index must be entered after the %:

[:a00:27ff:fe70:e88c%2](#)

Port number is set after the square brace when it is necessary to connect WinBox to other port than the default:

[:a00:27ff:fe70:e88c%2:8299](#)

WinBox neighbor discovery is capable of discovering IPv6 enabled routers. There are two entries for each IPv6 enabled router, one entry is with IPv4 address and another one with IPv6 link-local address. You can easily choose which one you want to connect to.

Run WinBox on macOS

Starting with macOS 10.15 Catalina, Apple has removed support for 32bit applications, meaning it is no longer possible to use regular Wine and regular WinBox in this OS. Wine has made available a 64bit version for macOS, and MikroTik has released a special [WinBox64.exe](#) version as well.

To run WinBox64 the following steps are required.

1. Install latest Wine from the [Wine macOS builds page](#) (wine-devel-7.X-osx64.tar.xz) and make sure you have downloaded the [WinBox64.exe executable](#) from the MikroTik download page.
2. Launch WinBox64.exe with "open file with" > Wine64.app

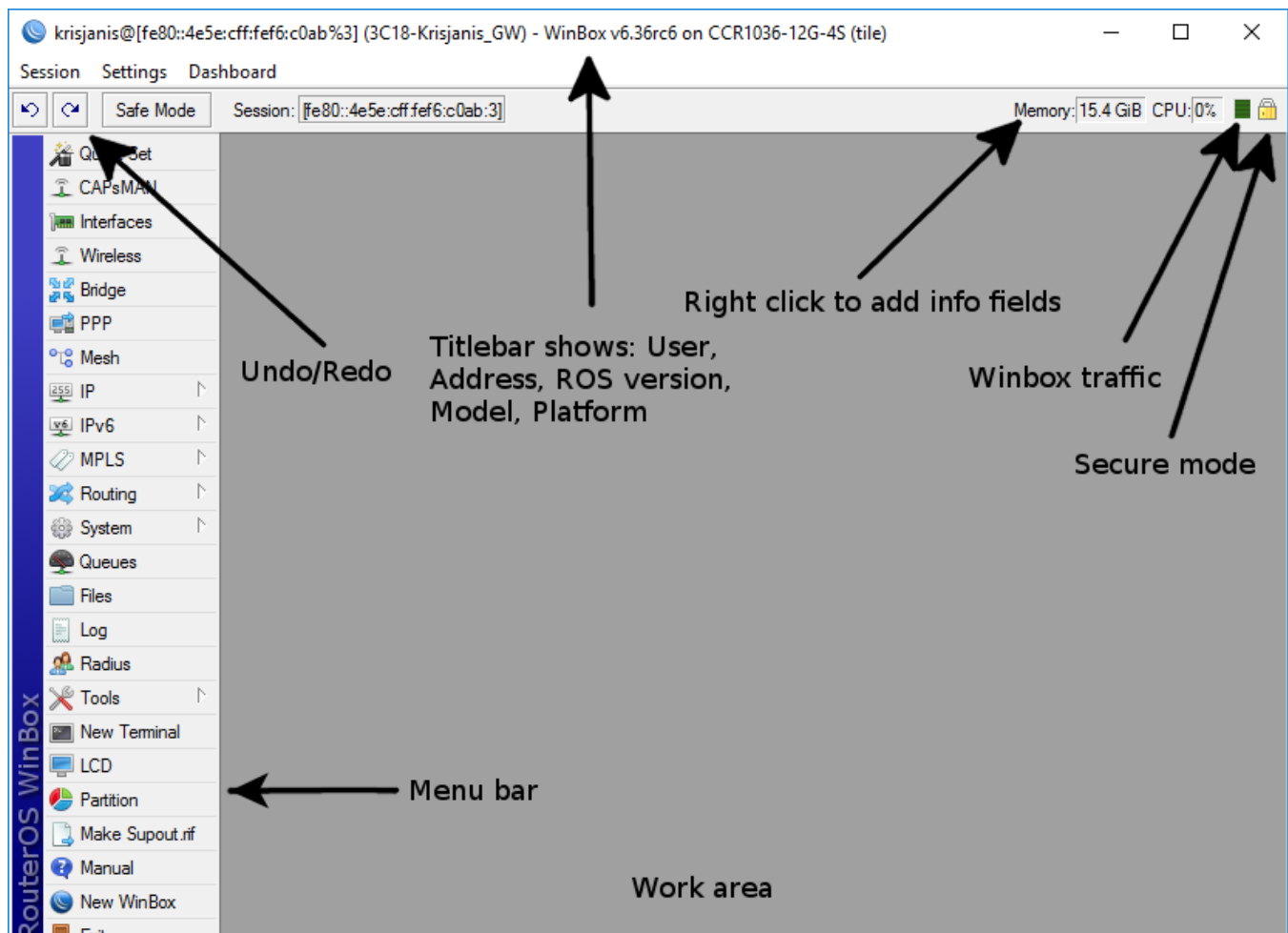
Run WinBox on Linux

It is possible to run WinBox on Linux by using Wine emulation software. Make sure that the Microsoft font pack is installed, otherwise, you may see distortions.

Interface Overview

WinBox interface has been designed to be intuitive for most of the users. The interface consists of:

- The main toolbar at the top where users can add various info fields, like CPU and memory usage.
- The menu bar on the left - list of all available menus and sub-menus. This list changes depending on what packages are installed. For example, if the IPv6 package is disabled, then the **IPv6** menu and all its sub-menus will not be displayed.
- Work area - an area where all menu windows are opened.



The title bar shows information to identify with which router WinBox session is opened. Information is displayed in the following format:

```
[username]@[Router's IP or MAC] ( [RouterID] ) - WinBox [ROS version] on [RB model] ([platform])
```

From screenshot above we can see that user **krisjanis** is logged into router with IPv4/IPv6 address **[fe80::4e5e:cff:fe6:c0ab%3]**. Router's ID is **3C18-Krisjanis_GW**, currently installed RouterOS version is **v6.36rc6**, RouterBoard is **CCR1036-12G-4S** and platform is **tile**.

On the Main toolbar's left side is located:

- undo
- redo

- **Safe Mode**
- Currently loaded session

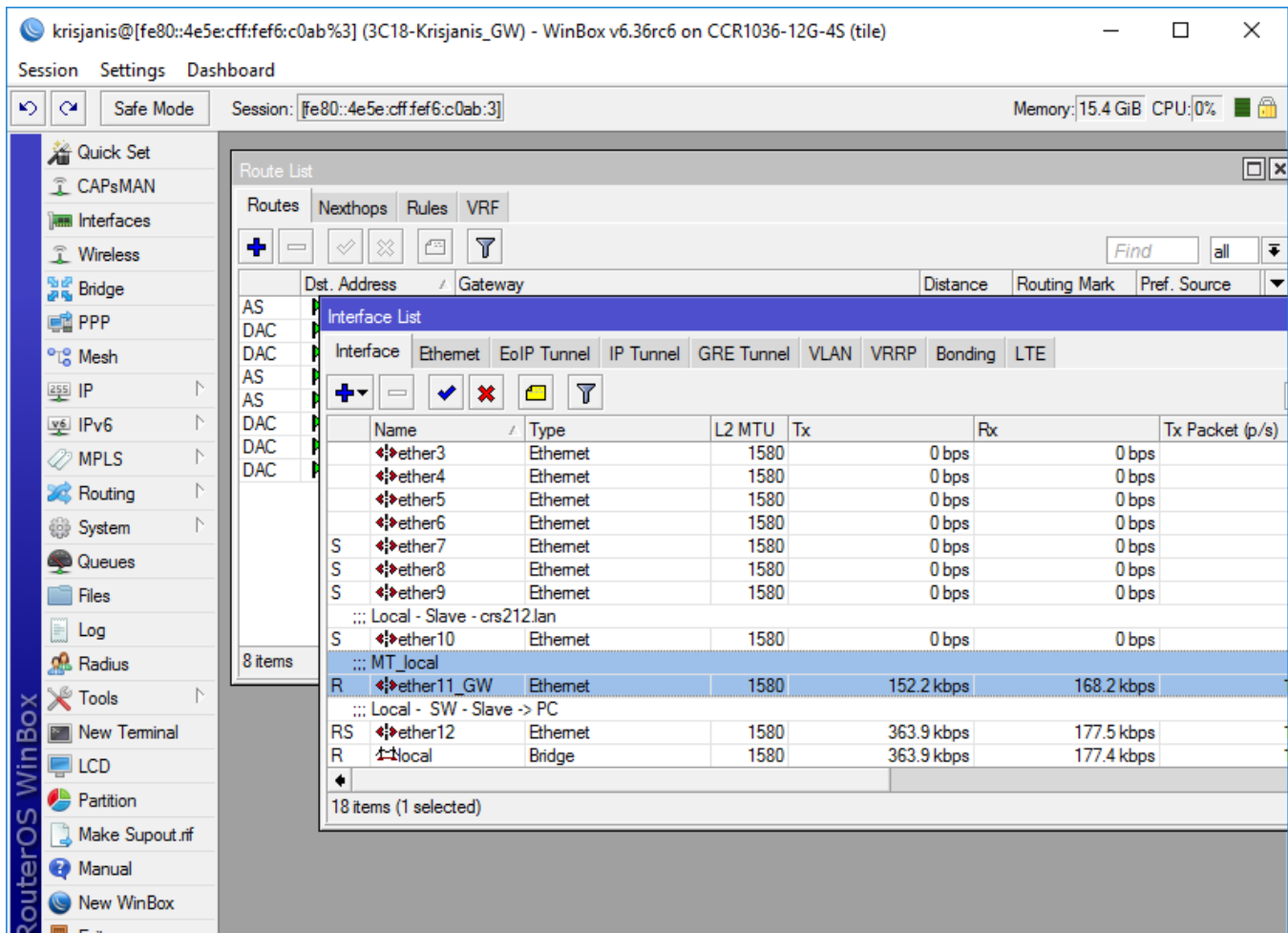
More about Safe mode and undoing performed actions read [in this article](#).

On the right side is located:

- an indicator that shows whether the WinBox session uses encryption
- WinBox traffic indicator displayed as a green bar,
- Custom info fields that can be added by the user by right-clicking on the toolbar and picking available info fields from the list

Work Area and Child Windows


WinBox has an MDI interface meaning that all menu configuration (child) widows are attached to the main (parent) WinBox window and is showed in the work area.








Child windows can not be dragged out of the working area. Notice in the screenshot above that the **Interface** window is dragged out of the visible working area and a horizontal scroll bar appeared at the bottom. If any window is outside visible work area boundaries the vertical or/and horizontal scrollbars will appear.

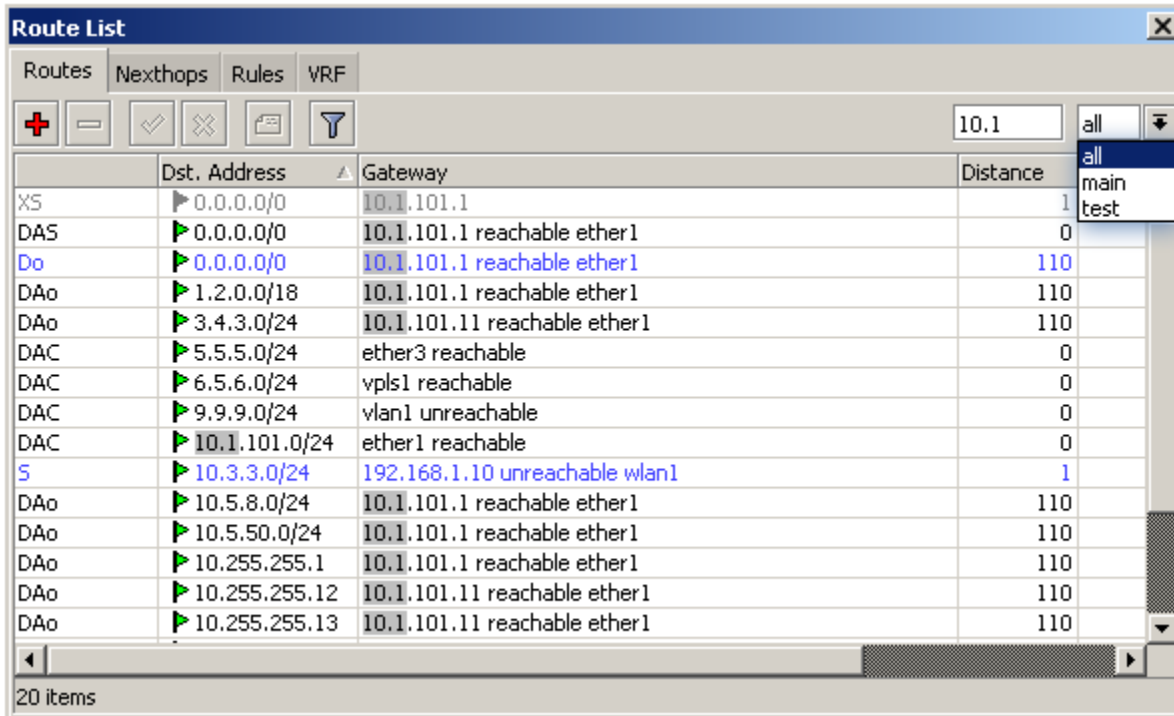
Child window menu bar

Each child window has its own toolbar. Most of the windows have the same set of toolbar buttons:

-  **Add** - add a new item to the list

-  **Remove** - remove the selected item from the list
-  **Enable** - enable selected item (the same as **enable** command from console)
-  **Disable** - disable selected item (the same as **disable** command from console)
-  **Comment** - add or edit a comment
-  **Sort** - allows to sort out items depending on various parameters. [Read more >>](#)

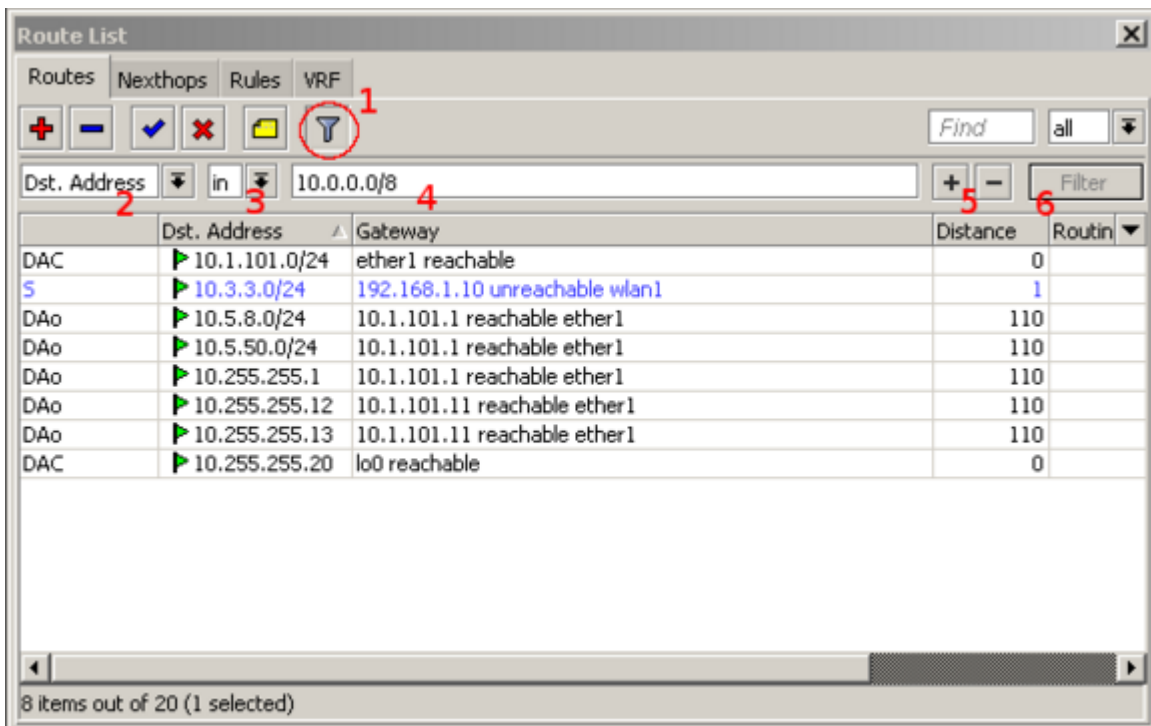
Almost all windows have a quick search input field on the right side of the toolbar. Any text entered in this field is searched through all the items and highlighted as illustrated in the screenshot below



Notice that on the right side next to the quick find input field there is a drop-down box. For the currently opened (IP Route) window, this drop-down box allows to quickly sort out items by routing tables. For example, if the **main** is selected, then only routes from the main routing table will be listed. A similar drop-down box is also in all firewall windows to quickly sort out rules by chains.

Sorting out displayed items

Almost every window has a **Sort** button. When clicking on this button several options appear as illustrated in the screenshot below



The example shows how to quickly filter out routes that are in the 10.0.0.0/8 range

1. Press **Sort** button
2. Choose **Dst.Address** from the first drop-down box.
3. Choose **in** from the second drop-down box. "in" means that filter will check if DST address value is in range of the specified network.
4. Enter the network against which values will be compared (in our example enter "10.0.0.0/8")
5. These buttons are to add or remove another filter to the stack.
6. Press the **Filter** button to apply our filter.

As you can see from the screenshot WinBox sorted out only routes that are within the 10.0.0.0/8 range.

Comparison operators (Number 3 in the screenshot) may be different for each window. For example "IP Route" window has only two **is** and **in**. Other windows may have operators such as "is not", "contains", "contains not".

WinBox allows building a stack of filters. For example, if there is a need to filter by destination address and gateway, then

- set the first filter as described in the example above,
- press **[+]** button to add another filter bar in the stack.
- set up a second filter to filter by the gateway
- press the **Filter** button to apply filters.

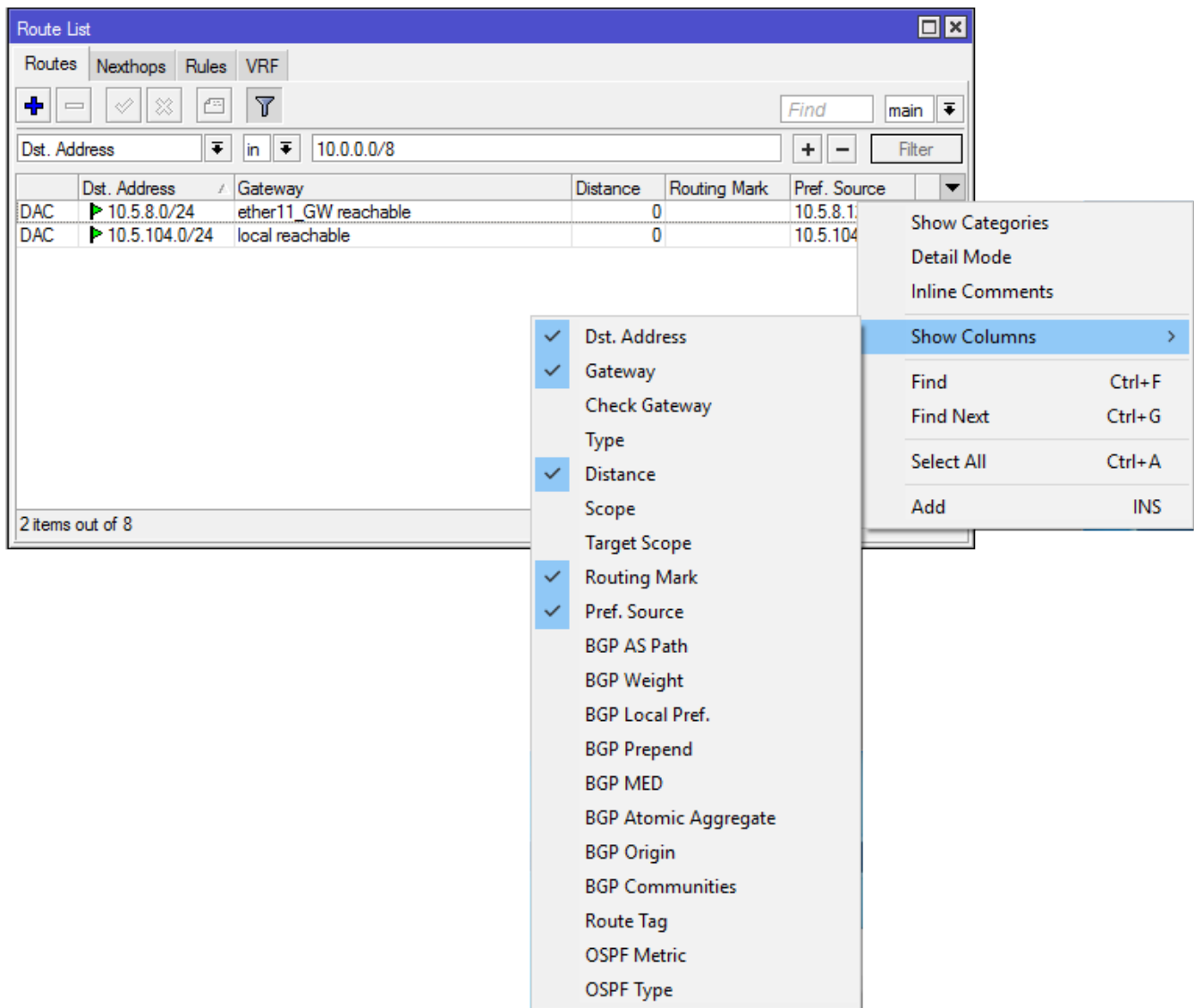
You can also remove unnecessary filters from the stack by pressing the **[-]** button.

Customizing list of displayed columns

By default, WinBox shows the most commonly used parameters. However sometimes it is needed to see other parameters, for example, "BGP AS Path" or other BGP attributes to monitor if routes are selected properly.

WinBox allows to customize displayed columns for each individual window. For example to add BGP AS path column:

- Click on the little arrow button (1) on the right side of the column titles or right mouse click on the route list.
- From popped up menu move to **Show Columns** (2) and from the sub-menu pick the desired column, in our case click on **BGP AS Path** (3)

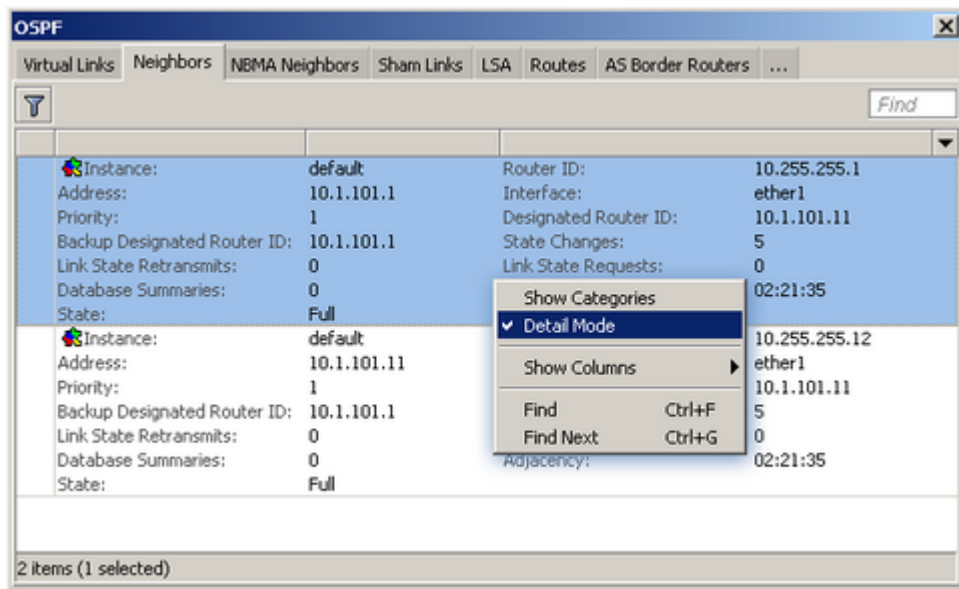


Changes made to window layout are saved and next time when WinBox is opened the same column order and size are applied.

Detail mode

It is also possible to enable **Detail mode**. In this mode all parameters are displayed in columns, the first column is the parameter name, the second column is the parameter's value.

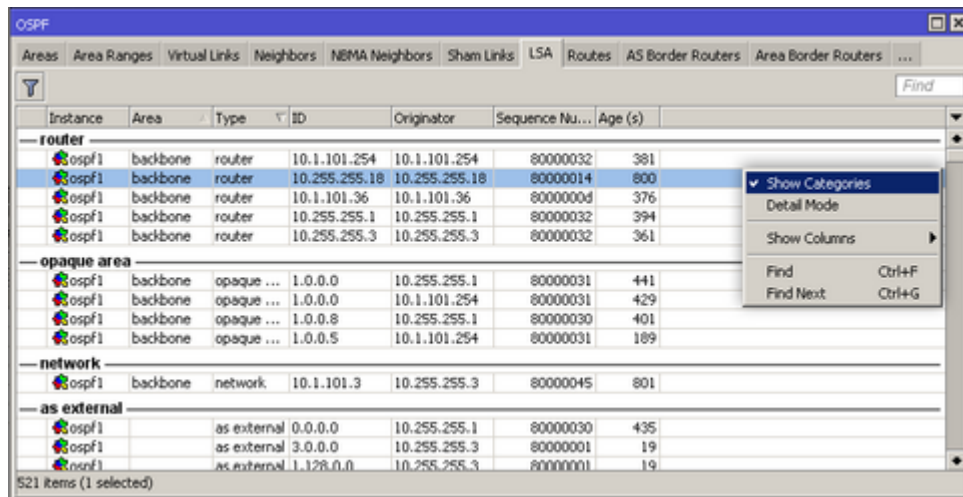
To enable detail mode right mouse click on the item list and from the popup menu pick **Detail mode**



Category view

It is possible to list items by categories. In this mode, all items will be grouped alphabetically or by another category. For example, items may be categorized alphabetically if sorted by name, items can also be categorized by type like in the screenshot below.

To enable Category view, right mouse click on the item list and from the popup menu pick **Show Categories**



Drag & Drop

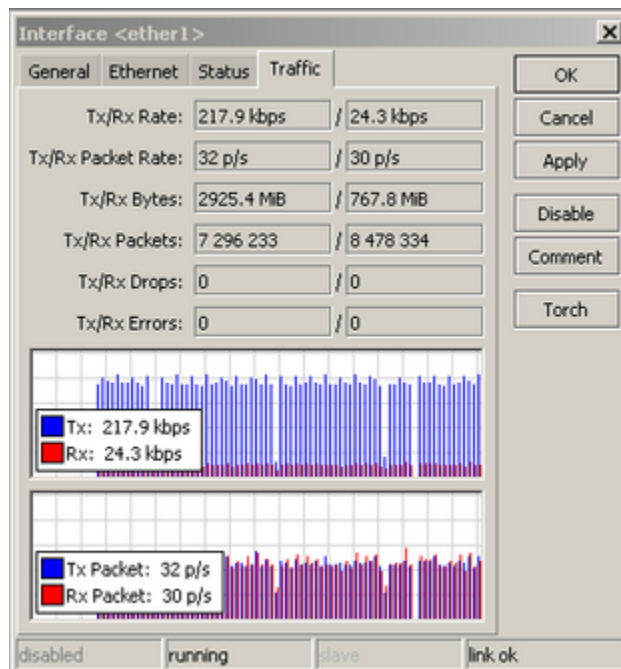
It is possible to upload and download files to/from the router using WinBox drag & drop functionality. You can also download the file by pressing the right mouse button on it and selecting "Download".



Drag & Drop works if WinBox is running on Linux using wine4. Drag and drop between two WinBox windows may fail.

Traffic monitoring

WinBox can be used as a tool to monitor the traffic of every interface, queue, or firewall rule in real-time. The screenshot below shows Ethernet traffic monitoring graphs.



Item copy

This shows how easy it is to copy an item in WinBox. In this example, we will use the COPY button to make a Dynamic PPPoE server interface into a Static interface.

This image shows us the initial state, as you see DR indicates "D" which means Dynamic:

krisjanis@[fe80::4e5e:cff:fe6:c0ab%3] (3C18-Krisjanis_GW) - WinBox v6.36rc6 on CCR1036-12G-4S (tile)

Session Settings Dashboard

Safe Mode Session: [fe80::4e5e:cff:fe6:c0ab:3] Memory: 15.3 GiB CPU: 0%

RouterOS WinBox

Quick Set
CAPsMAN
Interfaces
Wireless
Bridge
PPP
Mesh
IP
IPv6
MPLS
Routing
System
Queues
Files
Log
Radius
Tools
New Terminal
LCD
Partition
Make Supout.tif
Manual
New WinBox
Exit

PPP

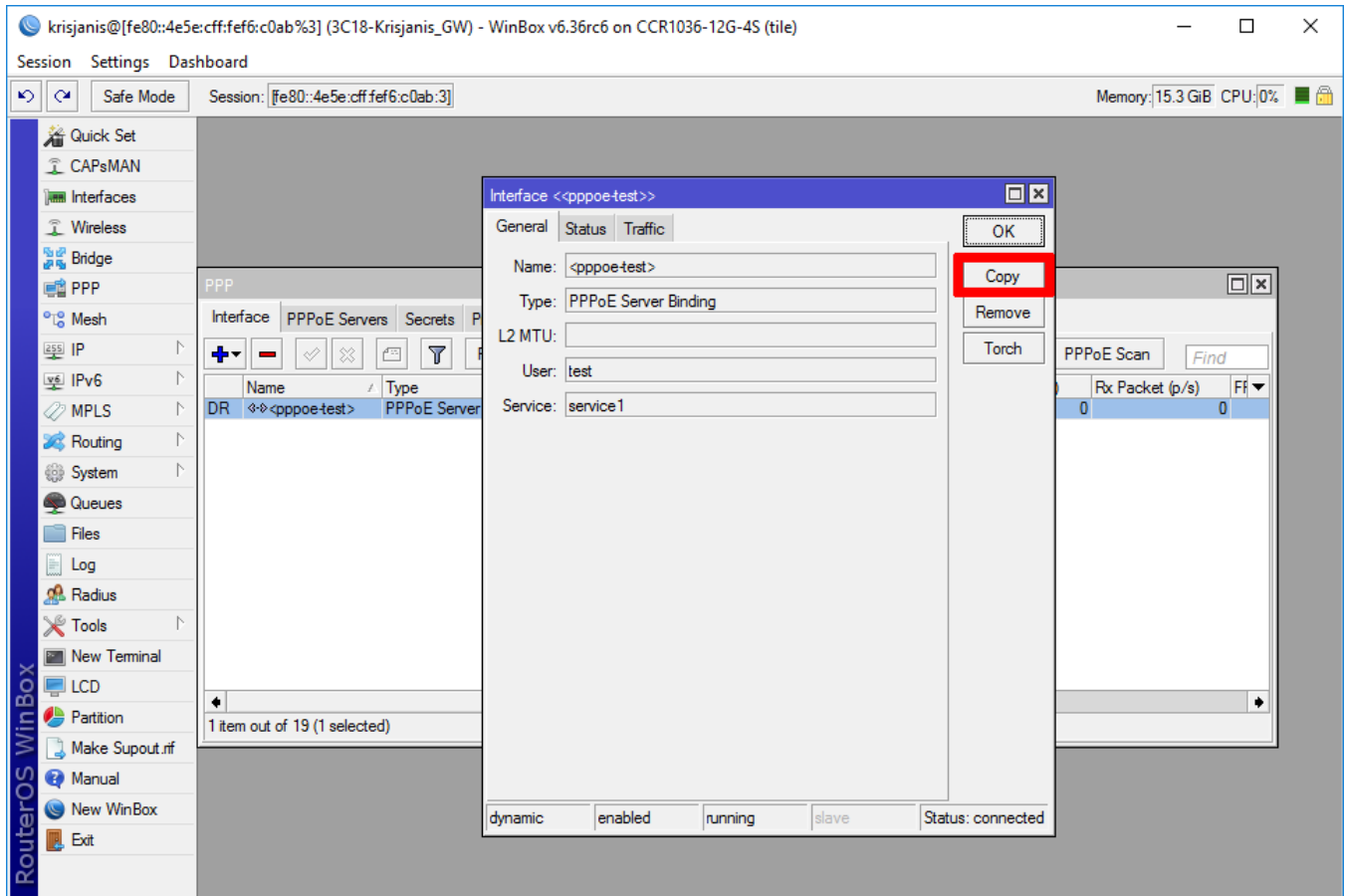
Interface PPPoE Servers Secrets Profiles Active Connections L2TP Secrets

PPP Scanner PPTP Server SSTP Server L2TP Server OVPN Server PPPoE Scan Find

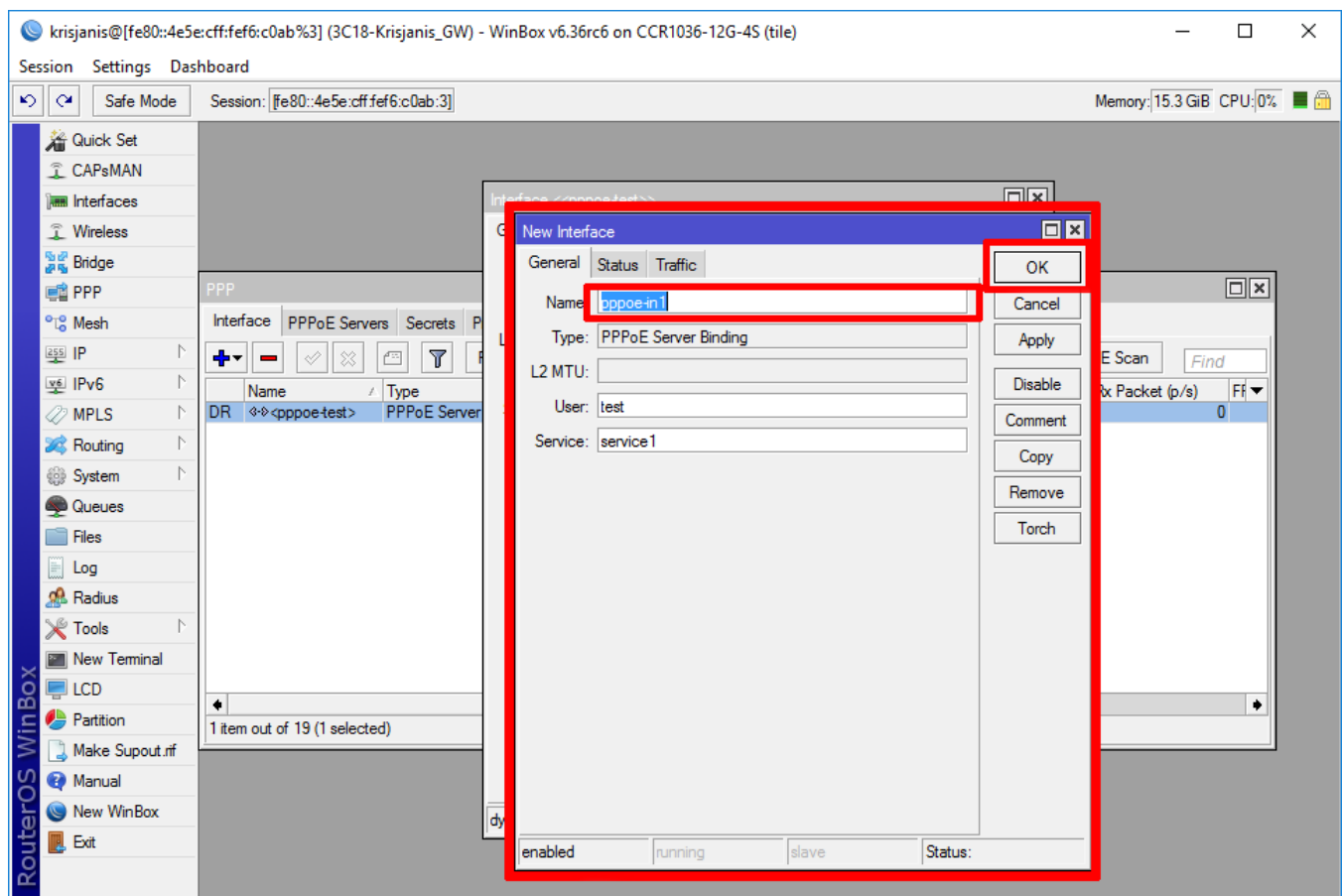
Name	Type	L2 MTU	Tx	Rx	Tx Packet (p/s)	Rx Packet (p/s)	Ff
DR <<<pppoe-test>	PPPoE Server Binding			0 bps	0 bps	0	0

1 item out of 19

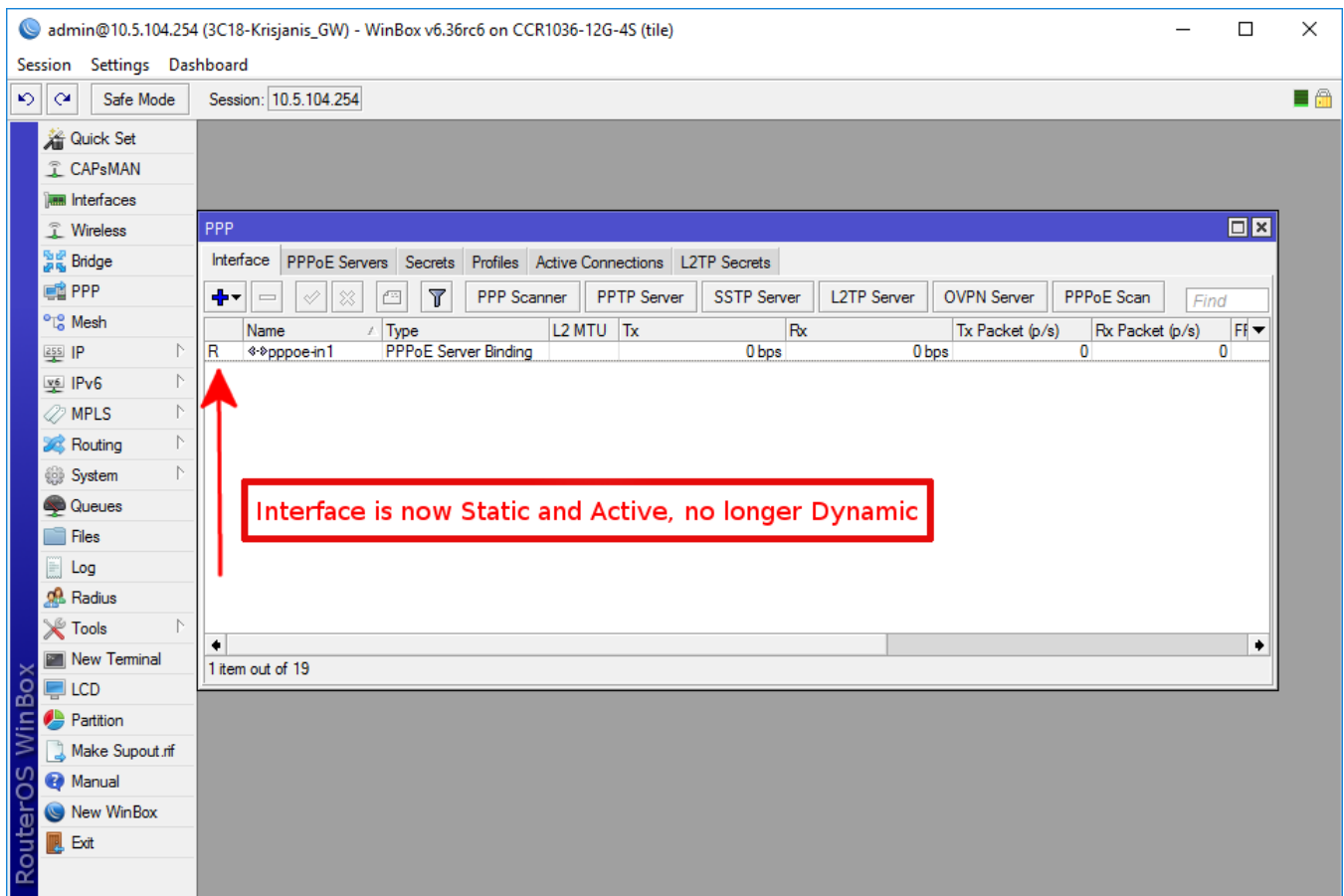
Double-Click on the interface and click on COPY:



A new interface window will appear, a new name will be created automatically (in this case pppoe-in1)



After this Down/Up event this interface will be Static:



Transferring Settings

- Managed router transfer - In the File menu, use Save As and Open functions to save the managed router list to file and open it up again on a new workstation.
- Router sessions transfer - In the Tools menu, use Export and Import functions to save existing sessions to file and import them again on a new workstation.

Troubleshooting

WinBox cannot connect to the router's IP address, devices do not show up in the Neighbors list

Make sure that the Windows firewall is set to allow WinBox connections through Private and/or Public network interfaces in the Windows firewall, it can be changed in *Control Panel\System and Security\Windows Defender Firewall\Allowed applications* or disable the Windows firewall.

I get an error '(port 20561) timed out' when connecting to routers mac address

Windows (7/8) does not allow mac connection if file and print sharing is disabled.

I can't find my device in WinBox IPv4 Neighbors list or MAC connection fails with "ERROR could not connect to XX-XX-XX-XX-XX-XX"

Most of the network drivers will not enable IP stack unless your host device has an IP configuration. Set IPv4 configuration on your host device.

Sometimes the device will be discovered due to caching, but MAC connection will still fail with "ERROR: could not connect to XX:XX:XX:XX:XX:XX"



WinBox MAC-ADDRESS connection requires MTU value set to 1500, unfragmented. Other values can perform poorly - loss of connectivity can occur.

