

# Reset Button

## Introduction

The RouterOS password can only be reset by reinstalling the RouterOS or using the reset button (or jumper hole) in case the hardware is RouterBOARD. For X86(CHR) devices, only a complete reinstall will clear the password, along with any other configuration. For RouterBOARD devices, several methods exist, depending on the device model.

## Reset From RouterOS

If you still have access to your router and want to recover its default configuration, then you can:

- Run the command **`/system reset-configuration`** from a command-line interface;
- Do it from the **System -> Reset Configuration** menu in the graphical user interface;

## Using Reset Button

RouterBOARD devices are fitted with a reset button which has several functions:

- **Loading the backup RouterBOOT loader**  
Hold this button before applying power, and release it after three seconds since powering, to load the backup boot loader. This might be necessary if the device is not operating because of a failed RouterBOOT upgrade. When you have started the device with the backup loader, you can either set RouterOS to *force backup loader* in the RouterBOARD settings or have a chance to reinstall the failed RouterBOOT from a ".fwf" file (total of **3 seconds**)
- **Resetting the RouterOS configuration**  
Hold this button until the LED light starts flashing, and release the button to reset RouterOS configuration to default.
- **Enabling CAPs mode**  
To connect this device to a wireless network managed by CAPsMAN, keep holding the button for 5 more seconds, LED turns solid, release now to turn on CAPs mode. It is also possible to enable CAPs mode via the command line, to do so run the command **`/system reset-configuration caps-mode=yes`**;
- **Starting the RouterBOARD in Netinstall mode**  
Or keep holding the button for 5 more seconds until the LED turns off, then release it to make the RouterBOARD look for Netinstall servers. You can also simply keep the button pressed until the device shows up in the Netinstall program on Windows.



You can also do the previous three functions without loading the backup loader, simply push the button immediately after you apply power. You might need the assistance of another person to push the button and also plug in the power supply at the same time!

## How to reset configuration

- 1) Unplug the device from power;
- 2) Press and hold the button right after applying power;

*Note: hold the button until the LED will start flashing;*

- 3) Release the button to clear the configuration;



If you wait until the LED stops flashing, and only then release the button - this will instead launch Netinstall mode, to reinstall RouterOS.



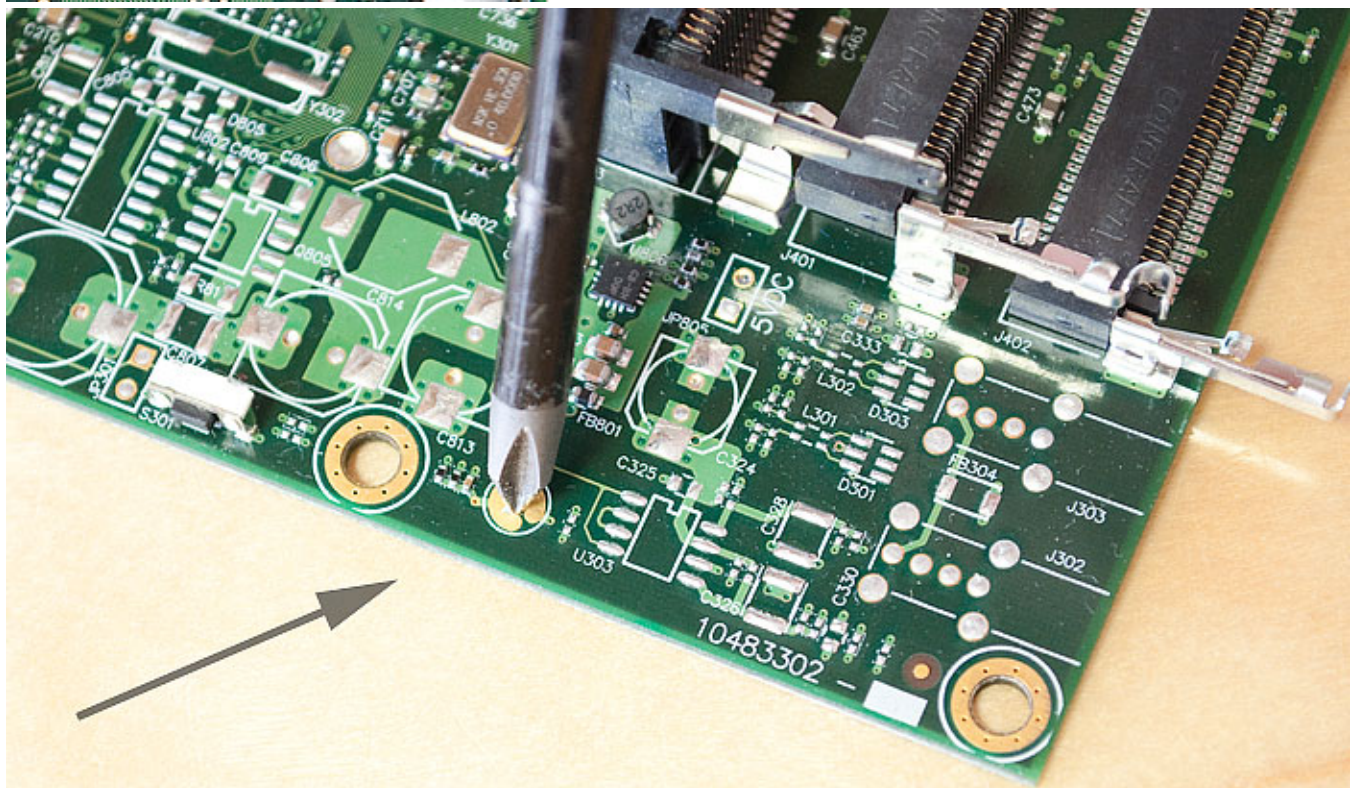
## Jumper hole reset

Older RouterBOARD models are also fitted with a reset jumper hole. Some devices might need an opening of the enclosure, RB750/RB951/RB751 have the jumper hole under one of the rubber feet of the enclosure.

Close the jumper with a metal screwdriver, and boot the board until the configuration is cleared:

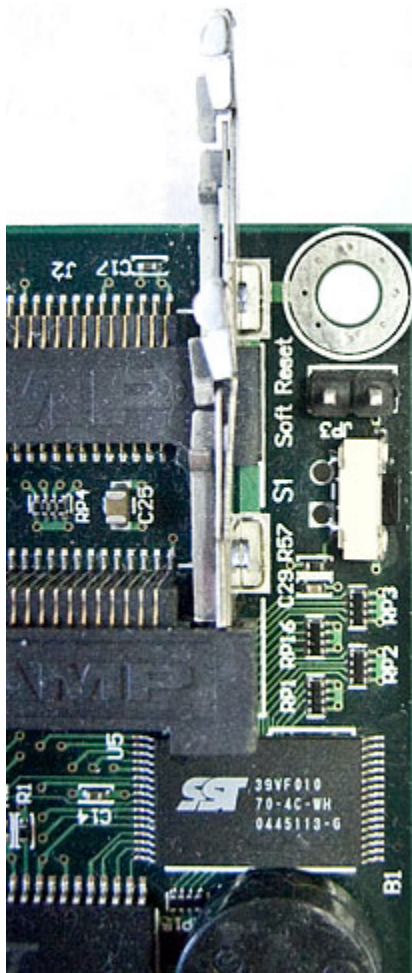


To reset RouterOS config  
Hold metal object in here  
while the board boots.



### Jumper reset for older models

The **below** image shows the location of the Reset Jumper on older RouterBOARDs like RB133C:



For RB133 and other  
older devices,  
close the reset jumper



Don't forget to remove the jumper after the configuration has been reset, or it will be reset every time you reboot!