

In this newsletter
read about

• Chateau 5G • RBGESP surge protector • XS+31LC10D • KNOT • Electric cars are taking over.. along with the SXT LTE! • MikroTik joins SDVoE Alliance • The coolest MikroTik setup

Be among the first ones to

JOIN THE MIKROTIK 5G GENERATION

with the ultra-fast MikroTik Chateau 5G

One router to delight them all – introducing the ultimate home AP with ultra-fast LTE/5G support

The world is changing. With so many people working remotely, mobile operators are facing new connection speed and stability requirements. The answer is 5G, and we have made a single device that will satisfy the most diverse client base. From a regular household with no tech background to the most advanced groups of system administrators and engineers, the Chateau series has something for everyone.



Ask your mobile operator about the
MikroTik Chateau devices!

Chateau is a high-speed, dual-band home access point with LTE/5G support – for really fast Internet anywhere, anytime. There are many options to choose from, depending on your needs: from CAT4 LTE up to the CAT20 LTE and the ultra-fast 5G. But LTE is not the only option – Chateau also features 5 x Gigabit Ethernet ports and a full size USB port.



Chateau has powerful integrated antennas, but you can connect external LTE antennas (included with some models) for even stronger signal.



The most advanced software on the market - RouterOS

We have been making our own software since 1996. With each new version our priority remained the same: to provide users with the freedom to explore different setups and always have the right tools for the job. Without unnecessary paywalls.

Run a secure VPN from the office directly to your home, enable parental control, QoS (traffic prioritization for certain needs, such as streaming), specific firewall rules, IPsec hardware acceleration, VLAN, e-mail or SMS notifications.. You can even automate complex trigger notifications (“Your bandwidth has reached X for Y minutes!”) and modify queues based on bandwidth usage.

If you can imagine it – RouterOS can achieve it.

Built with security in mind

Not only our RouterOS software comes with robust security options, we also focus on the production security. There is no outsourcing, every 5G device is assembled at our EU contract manufacturers and all the components come from reputable, trusted partners – such as Qualcomm. We cooperate with European law-makers and work hard to ensure full compliance with all the necessary safety policies. MikroTik is all about smooth, long-term cooperation without surprises.

Do you want the ultra-fast, secure and powerful Chateau 5G? Talk to your mobile operator today!

We are currently working with different mobile operators around the world to roll out the 5G product line as soon as possible, but, with your help, it can happen even faster. Show this product to your mobile operator – and let the demand create its own supply in the shortest time possible.

Chateau is a great choice for any mobile operator. It can be customized with a variety of labels or printed branding. And operators can use the TR-069 technology to create custom remote client management options, such as router configuration via the same web-page you are using to pay the mobile bill. There are six Chateau 5G models with various band options to comply with frequency regulations in different countries.

2021 is the time for great networking without compromises. Secure remote work options and a blazing fast Internet connection are no longer a luxury. They are a necessity. Pass this information to your mobile operator, and we will take it from there.

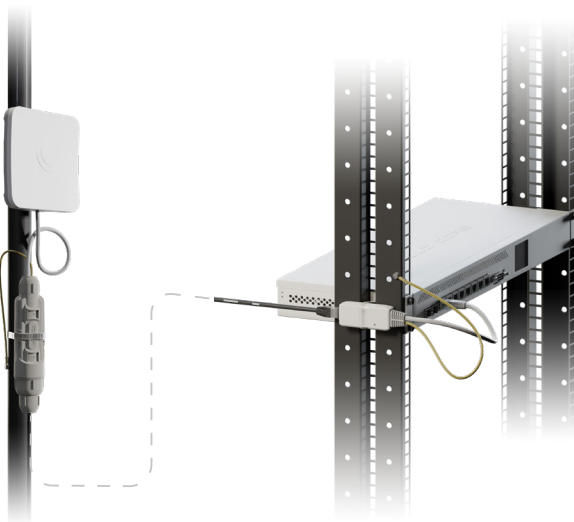
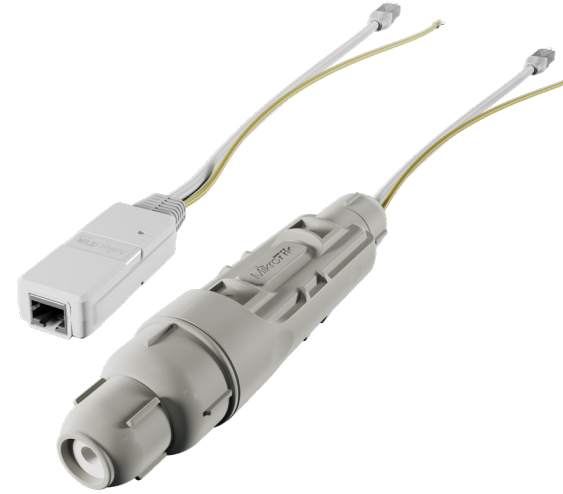
RBGESP surge protector

\$ 29 


-  NEW UPGRADED REVISION
-  NEW IP67 OUTDOOR ENCLOSURE
-  CAN ABSORB MULTIPLE IMPACTS
-  COMES WITH A GROUNDING WIRE

In life, you can't buy safety, but you can still keep your setup safe with an RBGESP surge protector. RBGESP is Gigabit Ethernet Surge Protector that can be used to protect the network from lightning or surge damages.

Here's what a typical use-case would be like. You have a mast with some antennas. And some switches on the ground. Put the GESP surge protectors on each end. They come sealed inside a new and improved IP67 weatherproof enclosure. Your antennas are now safe during a lightning storm.



Don't forget about the grounding wire! Secure it to the rackmount, mast, or any other structure that is connected to the ground. For maximum protection, you should use a surge protector on both ends of long cables.

 These small devices can make all the difference when it comes to lightning strikes or static build-up.

The GESP units can usually absorb multiple impacts, but make sure to check their condition after each surge. For attachment of GESP units, we recommend using PVC zip ties. Just don't make it too tight.

You know what they say – hope for the best, prepare for the worst. This small investment can save you lots of time and money, so why risk it? Grab a GESP and put your mind at ease!

XS+31LC10D

\$ 149



SFP, SFP+, SFP28 COMPATIBLE MODULE



PERFECT FOR MULTIPORT SETUPS



HIGHEST EFFICIENCY FOR THE LOWEST COST

A combined 1.25G SFP, 10G SFP+ and 25G SFP28 module.

This unit is a direct upgrade of our previous 10G SFP+ 10 km module: more functionality for the same price. We have added 25G SFP28 support – so you can use one module in all your setups. Perfect for the CCR2004-1G-12S+2XS connectivity router and any other multiport devices.

Specifications

Product code	XS+31LC10D
Format	SFP / SFP+ / SFP28
Connector	Dual LC UPC
Mode	Single mode
Data Rate	1G / 10G / 25G
Wavelength	1310 nm
Distance	10 km



Units are compatible with non-MikroTik SFP devices as well.

Electrical characteristics	Min.	Max.	Unit	Note
Receiver				
Receiver differential output voltage		1.6	V	1
Receiver LOS Load	4.7	10	kΩ	2
LOS output Voltage-High	-50	37.5	uA	3
LOS output Voltage-Low	-0.3	0.8	V	

1. Internally AC coupled, but requires a 100ohm differential termination at or internal to Serializer/Deserializer.

2. Pull up to VCC on host Board

3. Follow SFF-8419

Optical characteristics	Min.	Max.	Unit	Note
Transmitter				
Output optical power (Avg.)	-7.0	2.0	dBm	
Receiver				
Receiver sensitivity (OMA)		-12.0	dBm	
LOS-Deasserted (Avg.)		-15	dBm	
LOS-Asserted (Avg.)	-30		dBm	
LOS-Hysteresis	0.5	5.0	dB	

 CAT-M/NB TECHNOLOGY	 2.4 GHZ WIRELESS	 BLUETOOTH
 2X 100 MBPS ETHERNET PORTS	 POE-IN & POE-OUT	 MICROUSB
 GNSS	 GPIO	 RS485/MODBUS

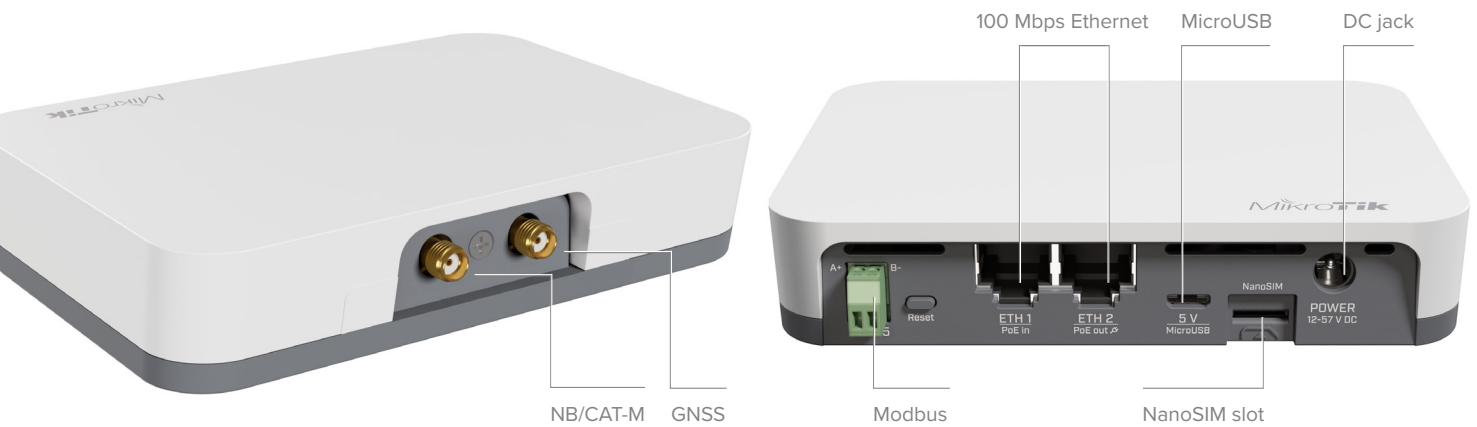


The newest addition to the MikroTik IoT product family – KNOT – is a truly universal device with exceptional connectivity options and protocol support. It is an IoT Gateway that uses Narrow Band and CAT-M technology. Because of the low cost, low bandwidth cellular connection, it is supported by countless mobile operators around the globe.

It doesn't matter whether you have devices that are no longer in production, devices that came out this year, or even some custom solutions by your technician – the KNOT can help you integrate or “tie” them all together in a single system.

KNOT can monitor onboard GPIOs, convert Modbus protocol to TCP, and even forward Bluetooth packets to TCP/IP network via HTTPS and MQTT.

You can use the KNOT as a TCP bridge from wired Modbus sensors to send readings to a Modbus server. Yes, the KNOT brings wireless connectivity to wired sensors and actuators, such as electricity meters and relays.



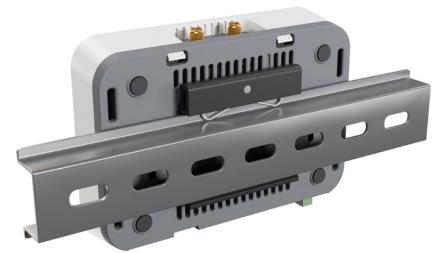
CAT-M brings better connectivity to host - reach even previously unavailable places!

It could be used as a backup connection for the Ethernet or as a management channel for your network. NB/CAT-M monthly plan is much cheaper than LTE. Why spend extra money on bandwidth you don't need? For example, you can manage a KNOT-powered vending machine with temperature and moisture sensors with only a few megabytes per day!

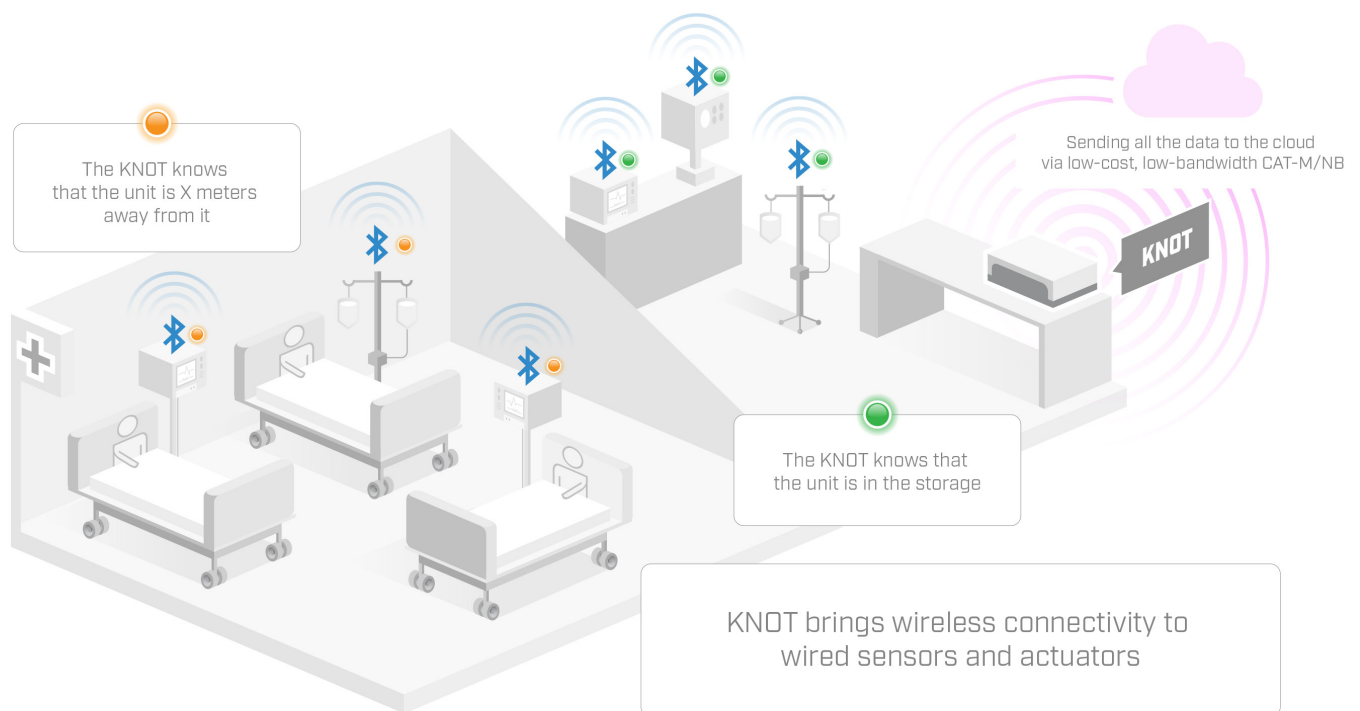
KNOT features so many protocol support and connectivity options: 2.4 GHz wireless, Bluetooth, 2x 100 Mbps Ethernet ports with PoE-in and PoE-out, MicroUSB. Maximum convenience at the lowest cost!

With the Bluetooth interface, you can use the KNOT for asset tracking and telemetry based on Bluetooth advertisement packets. KNOT supports any BLE tag that sends advertisement data. iBeacon, Eddystone or any other format. It has powerful filters for forwarding only relevant packets and ignoring others.

KNOT is a great tool for most outdoor cabinet IoT applications as well. It comes with a DIN rail mount that allows easy integration with all kinds of setups: from agriculture and asset tracking to cold chain monitoring, industrial manufacturing, and so on.



Bring flexible low-cost connectivity to the most remote or tricky areas with the MikroTik KNOT!



How would all this work in real life? Well, let's imagine a hospital. Lots of expensive assets moving across huge buildings. Tools, equipment, meds, you name it. Everything gets moved around all the time. Usually, hospitals have to spend a lot of resources on inventory checking.

Let's fix that. Place low-cost Bluetooth tags on all the important items. Add a KNOT device in every storage room. Now the hospital management always knows if the equipment is returned to its place. Why stop there? You can add temperature sensors to medical supplies and use the KNOT to keep track. The possibilities are endless.



But don't just take our word for it – here is a testimony from Gery Pollet, founder & CEO of Blyott. They help ambitious healthcare organizations through machine learning and modular real-time locating systems.

Electric cars are taking over.. along with the SXT LTE!

There are currently more than 100 EV charging stations operating in the Latvian national electric car charging network. As the network was built in three stages over several years, it uses different generations of MikroTik LTE routers, including the latest generation SXT LTE devices.

The picture shows a charging station in Baloži city during the cold Latvian winter. As you can see, the SXT can be very inconspicuous.

If you are looking for affordable weatherproof connectivity in remote areas – check out the SXT LTE6 kit. Due to its advanced LTE chip design and high gain antenna, it can provide connectivity for your building even where cell phones fail. Two Micro SIM slots & Ethernet ports, PoE-out, carrier aggregation for better responsiveness and higher efficiency.



Photo by SPX (Latvia)

MikroTik joins SDVoE Alliance

We are happy to join the ranks of [SDVoE Alliance](#). If we want to build a smart future for the whole world, collaboration is key. We are convinced all members of the SDVoE Alliance can benefit from our wide range of flexible 10G SFP+ and 10G copper products. The versatility of our RouterOS software is unparalleled, bound only by your creativity. We are excited to see what new projects can emerge from this.

“We welcome MikroTik to the SDVoE Alliance and look forward to collaborating with them and capitalizing on their more than 20 years’ experience in building data network infrastructures,” said Justin Kennington, president of the SDVoE Alliance. “SDVoE Alliance members and customers will no doubt appreciate the widespread availability and support for their products via distributors throughout the Americas, Europe, Africa, Asia and Oceania.”

SDVoE stands for “Software Defined Video over Ethernet”. The SDVoE Alliance is a nonprofit consortium of technology providers collaborating to standardize the adoption of Ethernet to transport AV signals in professional AV environments and to create an ecosystem around SDVoE technology allowing software to define AV applications.



SDVoETM
A L L I A N C E

The coolest MikroTik setup. Literally.

As John Steinbeck once wrote:

“What good is the warmth of summer, without the cold of winter to give it sweetness.”



Photos of MikroTik devices on the Czech side of the Ore Mountain Range provided by IPMedia network.



No heating? No problem! We test most of our equipment at temperatures as low as -40 °C.